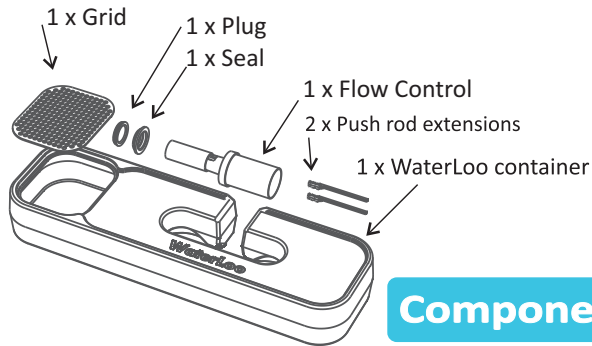




Smart Greywater Bank

Step-by-step instructions



Components



① Remove the cistern lid. For top flush mechanisms with cables, do not completely remove the lid and take care not to damage the cable.

Possible placement of valve

Possible placement of valve

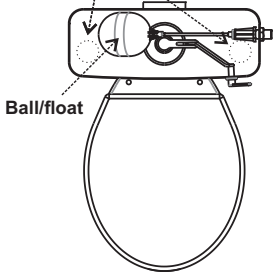
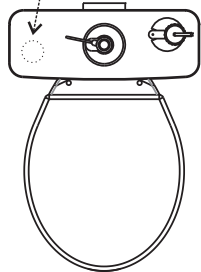


Diagram 1



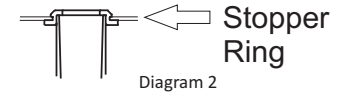
Bottom water entry with cable top flush

Maintenance: If needed rinse the working components with warm water from time to time to wash out possible sludge build-up due to soapy grey water.

② Identify a suitable open space inside the cistern where the Waterloo flow control can be positioned without the flush mechanism obstructing the flow control. This could be on the left or right-hand side of the cistern. In an extreme case, you should unscrew the ball/float in order to make space for the Waterloo flow control. In this scenario, turn off the water supply to the toilet.

③ Position the seal into the flow control opening in the Waterloo container that corresponds with the identified space in the cistern once the Waterloo container had been positioned on top of the cistern (see diagram 1)

④ Push the flow control into the seal until it reaches the stopper ring (see diagram 2)



⑤ Block the unused opening in the Waterloo container with the plug provided. Push and rotate the plug slightly to ensure that it seals properly (see diagram 3)

⑥ Position the Waterloo container on top of the cistern, making sure that the Waterloo flow control fits freely inside the cistern. Select the flush action option according to the type of flush mechanism (see below)

A. Lever mechanism: No additional adjustments are needed.

B. Top flush mechanism with cable: Feed the cable through the opening at the back of the Waterloo container. Ensure that the cable lines up with the elongated opening running in the length of the container. This will ensure unrestricted mechanical linking of the cistern flush button via the cable.

C. Top flush mechanism with push rod: (upgrade pack) Attach the two additional push rod extensions that come with Waterloo onto the one or two rods located on the inside of the cistern lid. (This extends the rod to accommodate the additional height of the Waterloo container and ensures connectivity between the rod end and cistern flush mechanism. Diagram 4)

⑦ Place the cistern lid on top of the Waterloo container. Turn off the main water supply to the toilet (normally positioned in the wall next to the toilet stop tap) **Note:** It is recommended that you leave the main water supply tap slightly open in case you do not have sufficient grey water.



Diagram 3

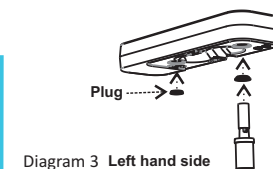


Diagram 3 Left hand side

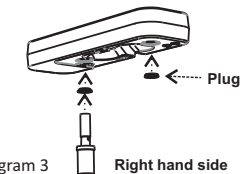


Diagram 3 Right hand side

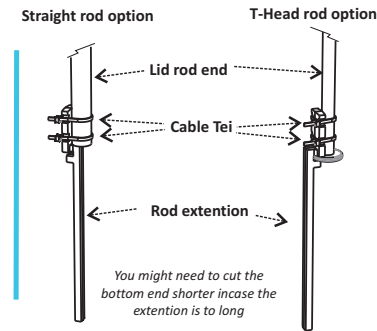


Diagram 4

You might need to cut the bottom end shorter in case the extension is too long